

Chapter 2

Administrative Structure

Heart of the Lakes Area Recreation Plan

Authorization

The Village of Brooklyn; the Townships of Columbia, Napoleon, and Norvell; and the Columbia School District have joined together to plan for public parks and recreation facilities under Public Act 156 of 1917 (Recreation and Playgrounds). The Act:

- ✘ “authorizes cities, *villages*, counties, *townships* and school districts to operate systems of public recreation and playgrounds.” It also allows those entities to:
 - ✘ “operate a system of public recreation and playgrounds; acquire, equip and maintain land, buildings or other recreational facilities; employ a superintendent of recreation and assistants; vote and expend funds for the operation of such system.”
 - ✘ “operate such a system independently or they may cooperate in its conduct in any manner which they may mutually agree; or they may delegate the operation of the system to a recreation board created by any or all of them, and appropriate money, voted for this purpose, to such board.”
- ✘ The act also allows park systems to operate on “(1) property under its custody and management; (2) other public property;” and “(3) private property, with the consent of the owners.”

A copy of PA 156 of 1917 is available online at:

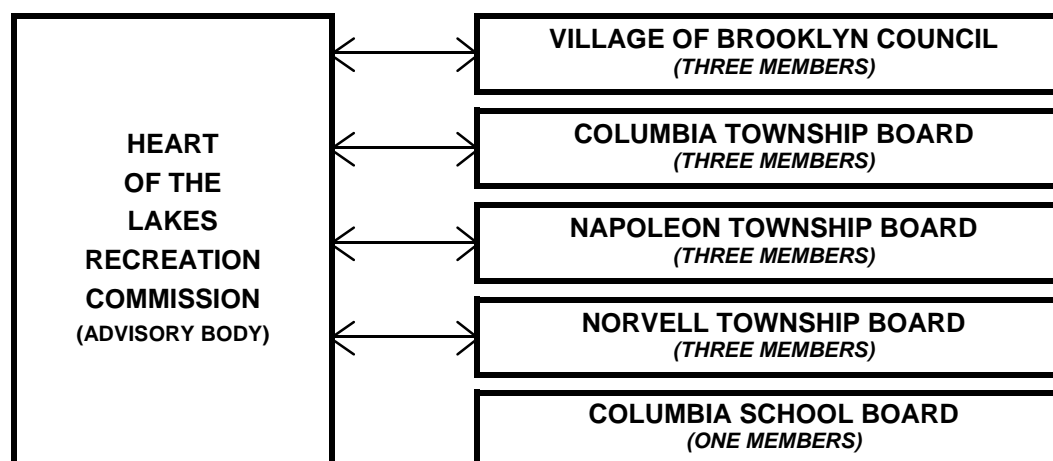
[http://www.legislature.mi.gov/\(jvpdab552sox_emek3mee3h55\)/documents/mcl/pdf/mcl-Act-156-of-1917.pdf](http://www.legislature.mi.gov/(jvpdab552sox_emek3mee3h55)/documents/mcl/pdf/mcl-Act-156-of-1917.pdf)

Organizational Structure

Current membership in the Heart of the Lakes Recreation Commission includes the Townships of Columbia, Napoleon, and Norvell as well as the Village of Brooklyn and the Columbia School District. Each local unit of government appoints 2 commissioners to represent their interests. The Village President and Township Supervisors also serve as ex-officio voting members. Columbia School District appoints 1 member to the Commissioner. Staff from the Region 2 Planning Commission serves as the secretary of the 14-member Commission.

The Heart of the Lakes Recreation Commission serves as the local recreation commission for each of the member local units of government. In that capacity, the Commission has developed this plan. The Commission also makes recommendations on recreation issues to the board/council of member units of local government, as requested.

ORGANIZATIONAL STRUCTURE



The following listing provides details on how each local unit of government maintains its park and recreation facilities:

- × **Norvell Township** – maintenance staff
- × **Napoleon Township** – maintenance staff
- × **Columbia Township** – maintenance staff
- × **Village of Brooklyn** – Department of Public Works (DPW)
- × **Columbia School District** – maintenance staff

Each local unit of government may utilize volunteers for specific projects such as local grant matches and.

Sources of Funding

Presently, the Heart of the Lakes Recreation Commission identifies several potential sources of revenue for Area recreation facilities and programs:

- ✦ General tax fund dollars from member units of government;
- ✦ Grants awarded for specific projects; and
- ✦ Donations from the general citizenry and philanthropic organizations.

General tax fund dollars are used for the maintenance and programming of Area parks and recreation facilities.¹ Local units of government also utilize general funds for membership dues in the Heart of the Lakes Recreation Commission.² A portion of the local match required of most grants may also come from the general fund of a local government.

Grants are generally awarded for the acquisition of parkland and the development of a park or park facility (e.g., trails, playgrounds, picnic shelters, sports facilities, etc.). Grants for parks and recreational facilities are likely to come from several sources:

- ✦ **The Michigan Department of Natural Resources**
 - ✦ The Michigan Natural Resources Trust Fund
 - ✦ The Land and Water Conservation Fund³
- ✦ **The Michigan Department of Transportation**
 - ✦ The Transportation Enhancement Program³
- ✦ **The Jackson County Road Commission**
 - ✦ The 1% annual allocation of state transportation (Act 51) fund for non-motorized facilities.

¹ Ownership and maintenance of recreational facilities are maintained by the local units of government which comprise the Heart of the Lakes Recreation Commission.

² The cost of administering the Commission and development of a recreation plan is shared equally among the membership. The costs associated with considering a grant application or a specific study will be shouldered by the local government or governments proposing the action.

³ This is a Federal program administered locally by the State of Michigan.

Donations can also be made to member units of government to be used at the discretion of that government or for a specific recreation facility or program. Donations for specific projects are often used to meet the local match for a grant.

Parks and Recreation Budgeting

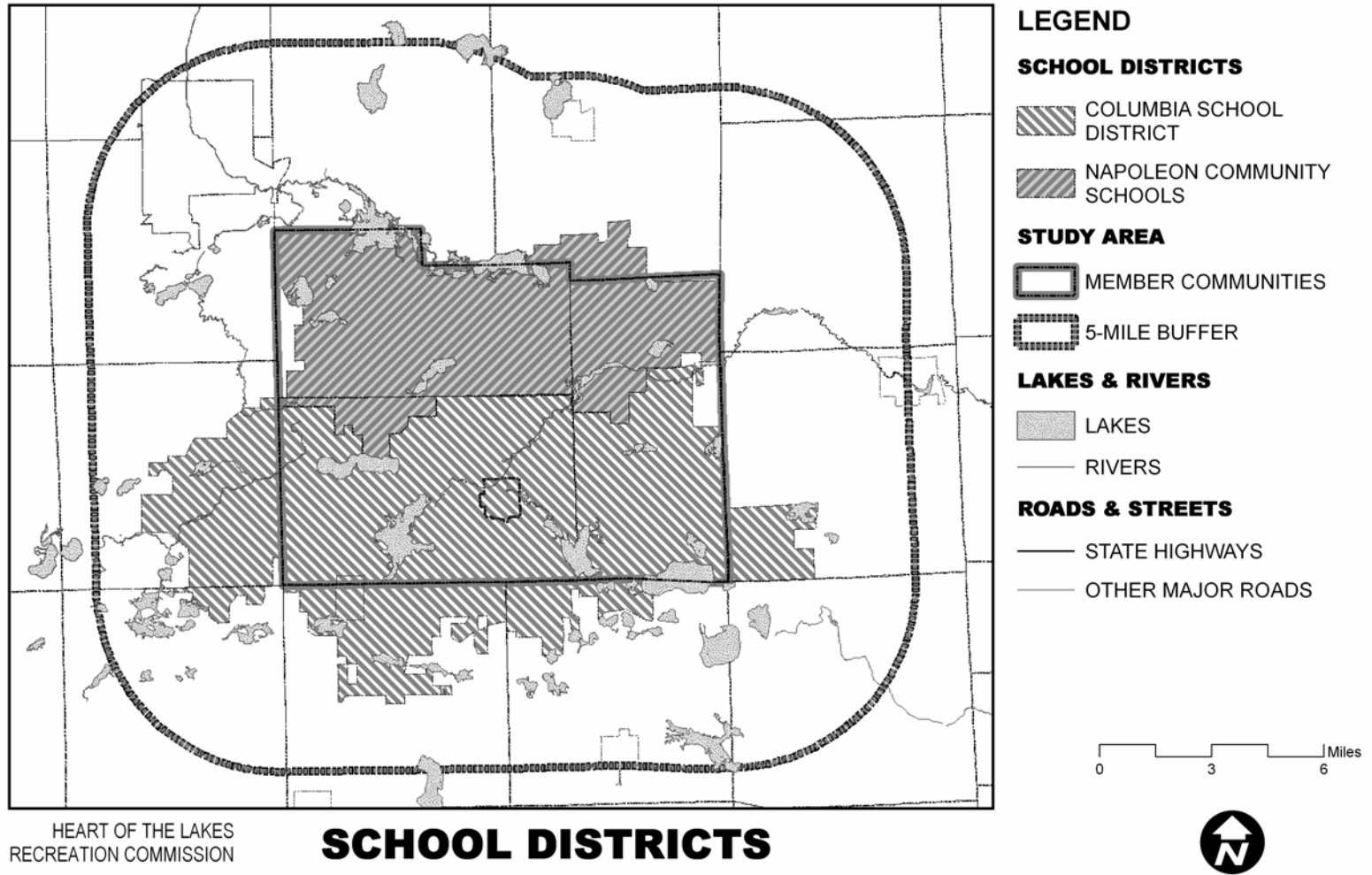
The parks and recreation budgets for each member of the Heart of the Lakes Recreation Commission have been used almost entirely for the maintenance and programming of its park and recreation facilities. The Townships and Village also provided \$2,000 to the Heart of the Lakes Recreation Commission in the first quarter of 2006 for 1) its formation, 2) the development of the first edition of its recreation plan, and 3) operating costs for its first year of operation. Since that time, the Columbia School District also joined the Commission. All of these governments have also committed to an annual payment of \$250 a year for the administration of the program. The general fund of each local unit of government is the source of this funding. *This space is reserved for a summary of recent capital improvements to parks and recreation facilities maintained by the member units of local government.*

Relationships with Other Public Agencies

The Townships, Village, and School Districts are not the only suppliers of parks and recreational opportunities to the residents of the Heart of the Lakes Area.

Schools

Two school districts serve the Area. The service area for the Columbia School District, a member of the Recreation Commission, includes the Villages of Brooklyn and Cement City; the overwhelming majority of Columbia Township; roughly the southern two-thirds of Norvell Township; and portions of other townships to the south, the west, and the east. All school facilities are located within Brooklyn and Columbia Township. The service area for the Napoleon Community Schools includes the overwhelming majority of Napoleon Township; roughly the northern third of Norvell Township, and small portions of Columbia and Grass Lake Townships.



The Jackson County Intermediate School District (which includes the Napoleon Community Schools and the Columbia School District) provides educational services to residents and local school districts. In addition to training with staff and community members; those services include: training with students in specific areas (e.g., career and technical education, special education, and adult education) and through special programs (e.g., math and science, early childhood, gifted and talented, assistance with technology/media plans and services; and workforce development).

Please refer to Chapter 3 for a more detailed description of the recreational facilities and programs provided by schools.

Local, County, State, and Private Parks and Recreation Facilities

Nearby cities and villages as well as some townships maintain parks. Lenawee County, Hillsdale County, and Washtenaw County maintain park systems. The service area of the Huron-Clinton 'Metropark' System includes Washtenaw County. The State of Michigan also provides a variety of recreational facilities in the form of state game, wildlife, and recreation areas; state historic parks; and state parks within the Heart of the Lakes Area as well as throughout the State. A variety of private entrepreneurs and quasi-public agencies also provide recreation facilities and programs in and around the Heart of the Lakes Area. Recreational programs take place in all of the facilities listed above. Those programs are sponsored by a variety of public, quasi-public, and private boosters.

Please refer to Chapter 3 for a more detailed description of county and state parks in the Heart of the Lakes Area.